

TRITEX NDT, manufacturer of ultrasonic thickness gauges, is represented in Chile by BENTOS.

TRITEX NDT, specializes in the manufacture of ultrasonic thickness gauges. These devices allow to verify the thickness of metal of various types and levels of corrosion.

The Tritex probes uses the "multiple echo" technology, which significantly reduces the time of preparation of metal as it is not necessary to remove the surface layers of oxide or other elements.



MARINE APPLICATIONS: thickness measurement of hull structure, underwater inspection of hulls, pipelines, outfalls, piers, moorings, etc.



INDUSTRIAL APPLICATIONS: thickness measurement of pipes, storage tanks, bridge structures, etc.



GRP Thickness Gauge | MG5300

Designed to check the condition of Glass Reinforced Plastic (GRP) or Engineering Plastics. It can also be used on uncoated metal.



GRP Thickness Gauge Datalogger | MG5300

For checking the condition of GRP, engineering plastics or metal. Measurements can be stored on the gauge and wirelessly transferred to the PC.



Hands Free Thickness Gauge | MG5500

Mounts onto a belt or chest harness for hands free use. Bright LED display. Top display for convenient viewing.



General Purpose Gauge | MG5600

On screen user information such as probe frequency and remaining battery. Colour LCD display. Easy to use keypad and menu system.



General Purpose Gauge Datalogger | MG5700

Stores measurements in a grid, string or combination of both. Easy template setup. Transmits data to the PC using wireless technology.



Surveyor Thickness Gauge | MG5650

For metal, plastic and GRP measurement. Has selectable Multiple Echo, Echo to Echo or Single Echo measurement modes.



Surveyor Thickness Gauge Datalogger | MG5750

For metal, plastic and GRP measurement. Stores readings with easy template setup. Transmits data to the PC using wireless technology.



Underwater Diver Thickness Gauge | MG3000

Large bright 10mm display. Integral battery with 55 hours runtime. Can be easily upgraded to a topside repeater. 500m depth rating.



Underwater ROV Thickness Gauge | MG4000

Two models available for 1000m and 4000m depths. Simple and easy to install. Fits most work class ROV's.



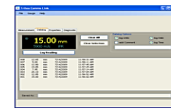
Surface Display Unit | MG3100

Used with the Multigaugage 3000 to provide displayed measurements on the surface. Two way communication to the Multigaugage 3000. Ideal for class surveys or when visibility is poor.



ROV Probe Holder

Perfectly presents probe to the surface being measured on either curved or flat surfaces. Provides probe protection against hard knocks. Fits most work class ROV's.



Communicator Software

Simple software which displays measurement results from the Multigaugage 3000 or Multigaugage 4000. Stores measurements in a string, grid or combination of both. Files can be easily exported.

Surface and submarine units <http://www.tritexndt.com>