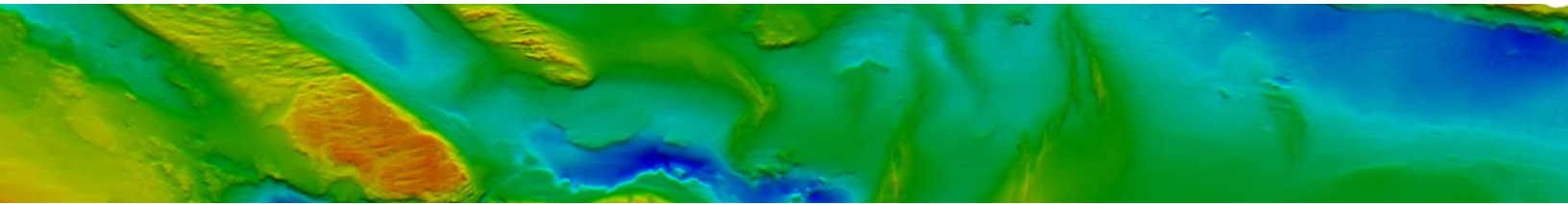




**Energy Strategy for the Development of Ocean Power for
Coastal Communities of the Valparaíso Administrative**

A topographic map of a coastal region, showing land in shades of green and brown and water in shades of blue. The map is positioned at the bottom of the page, with the text "Integral Solutions" overlaid on it.

Integral Solutions



BENTOS is currently participating together with the companies Fundación Chile, Redes, I2D Technik and Con Potencial in a project entitled **"Energy Strategy for the Development of Ocean Power for Coastal Communities of the Valparaíso Administrative Region, Chile,"** financed by the Regional Government of the Valparaíso Administrative Region, Chile through regional government's Innovation Fund for Competitiveness 2014 (FIC-2014) and designed to enhance the advancement of the marine energy industry in the Chilean Fifth administrative Region.

The marine energy project features the productive use of ocean waves as a source of electric power generation (wave power). The subject areas studied for the performance of this project are island areas where the high cost of fuel used for electric power generation (purchase and transportation costs included) invite possibilities to consider the competitive merits of using other sources of power generation, such as non-conventional renewable energies (NCRE). The island areas studied in this project are: Robinson Crusoe Island and Easter Island.

The project execution phase was carried out throughout calendar year 2015 and the first half of 2016, with the presentation of the conclusions and the project close scheduled for performance in July 2016.

EXECUTED BY:				

<http://www.mundoacuicola.cl/?/9/62357>
<http://www.revistaei.cl/2016/06/14/impulsan-energia-marina-en-archipelago-de-juan-fernandez/>



ROBINSON CRUSOE ISLAND