

HYPACK SEMINARS

This training will concentrate on all the aspects of single beam and multibeam hydrographic surveying and dredge management using our HYPACK®, HYSWEEP®, and DREDGEPACK® packages.

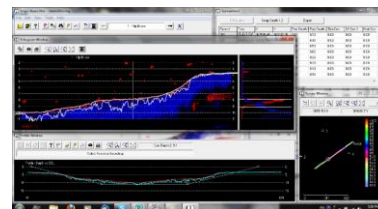


Dates/Location:

April 16th - 17th: China
April 18th - 20th: Russia
April 19th - 20th: China
April 23rd - 24th: Egypt
May 10th - 12th: Australia
May 16th: Workshop in Canada
June 14th -16th: Japan
June 28th - 30th: Brazil
July 11th - 13th: Vietnam
July 7th - 8th: Singapore
August 2nd - 4th: Peru
August 23rd - 25th: Indonesia
August 29th - 31st: India
September 5th - 7th: South Africa
October - Dates TBD: Ukraine
October 3rd-5th: Argentina
October 10th - 12th: Poland
October 18th-20th: Panama
November 7th: Workshop in Germany
November - Dates TBD: France

SINGLE BEAM COURSE

This training will concentrate on Single Beam survey set up, data collection and processing of single beam data. The class is limited to 20 people.

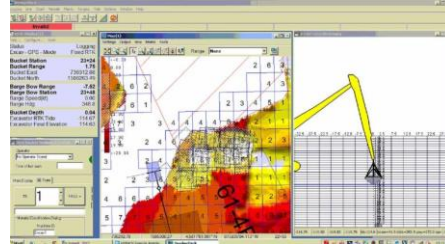


Dates/Location:

September 13th – 14th: Texas

DREDGEPACK COURSE

This course will concentrate on the basics of dredging using DREDGEPACK® Software applications for various dredge types. This training is limited to 15 people.

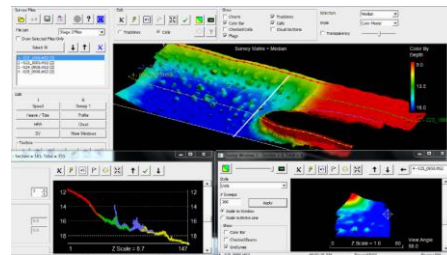


Dates/Location:

November 1st-2nd: Alabama

HYSWEEP MULTIBEAM COURSE

This training will concentrate on HYPACK® and HYSWEEP® multi-beam applications. This class is also limited to 20 people.



Dates/Location:

May 10th - 12th: Ireland

May 10th-12th: California

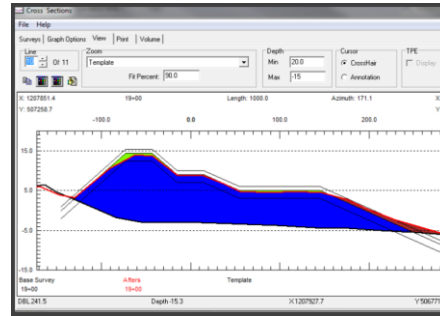
May 12th: Texas

May 30th - June 3rd: Mexico

November 15th-17th: South Carolina

VOLUMES COURSE

This training will concentrate on Volumes Computation Methods available in HYPACK®. Day 1 focuses on volumes by sections and Day 2 focuses on volumes by TIN MODEL. It will also provide instruction in the design of simple and complex channels for volume computations. The course will be 'hands on', meaning attendees will be expected to work examples on their own computers using HYPACK® 2016. This class is limited to 15 people.

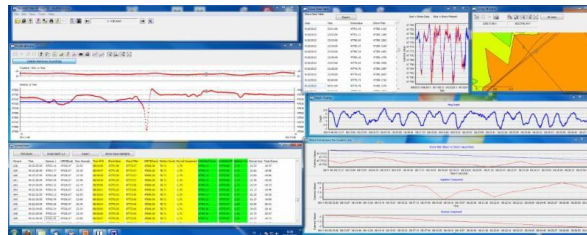


Dates/Location:

November 3rd-4th: Alabama

SIDE SCAN/SUB-BOTTOM/MAGNETOMETER COURSE

This training will concentrate on the use of Magnetometers within HYPACK®, Side Scans within HYPACK®, and use of sub-bottom sonars within HYPACK®.



Dates/Location:

December 6th-7th: Florida

For additional information or to register you can contact Training@hypack.com or call (860) 635-1500. For additional training events, please visit our website: www.hypack.com